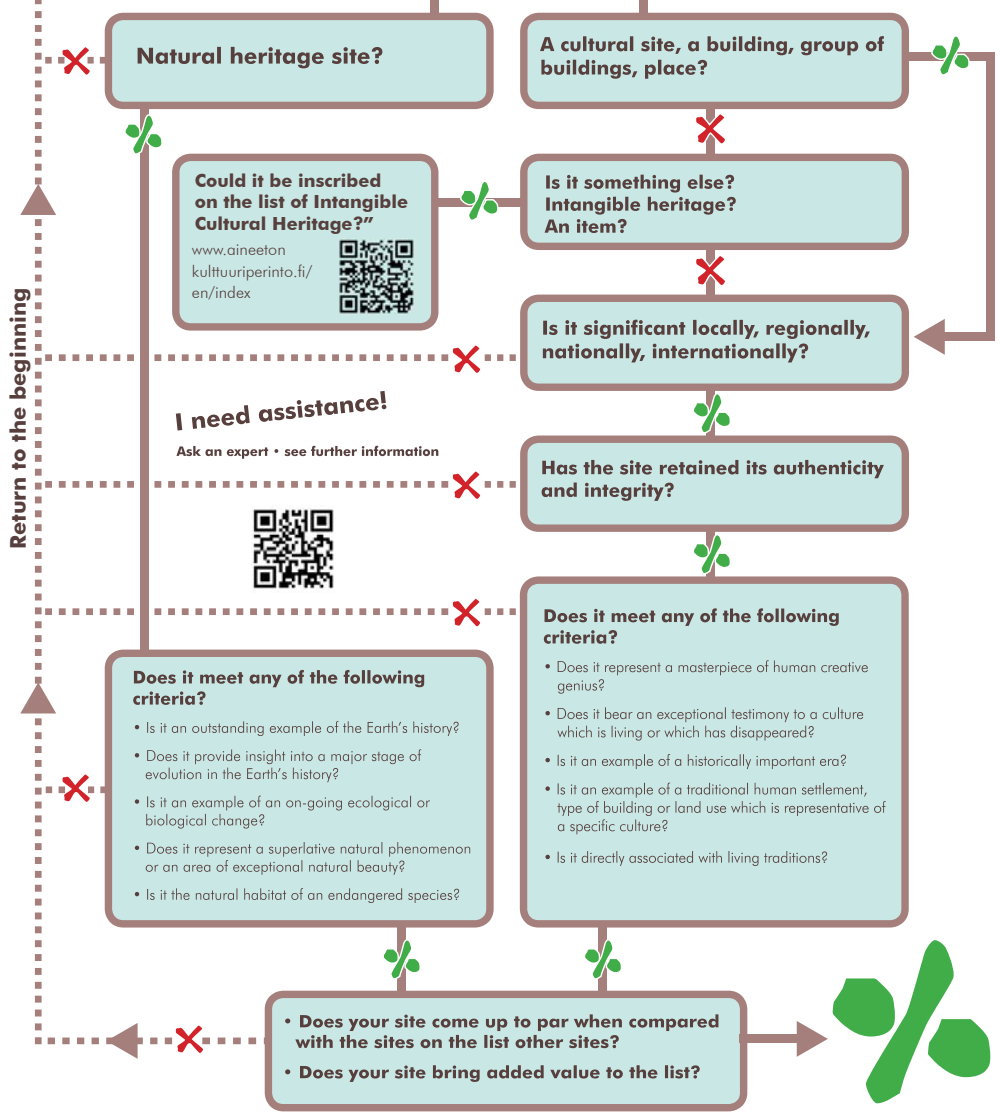


A NEW WORLD HERITAGE SITE?

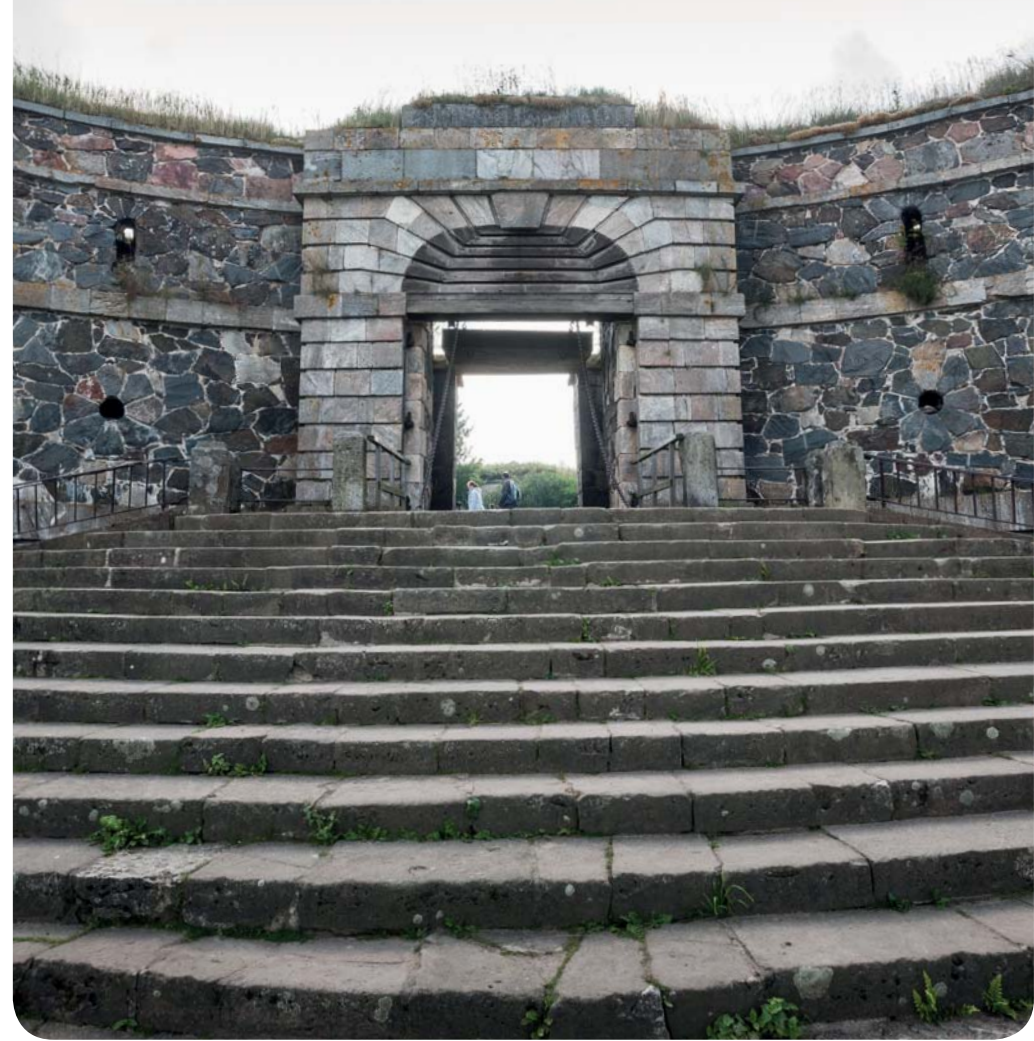
See if your suggestion meets the requirements set for World Heritage Sites!

**What would you nominate as a world heritage site?
Which site would you choose within your own immediate environment?**

Is your nominated site... **A** **B**



OUR SHARED WORLD HERITAGE



National Board of Antiquities
Association of Cultural Heritage Education in Finland



WELCOME TO A WORLD HERITAGE SITE!

Student

Welcome to explore World Heritage!
Discover Our common Heritage exhibition on the website www.kulttuurinvasio.fi and complete the exercises.



Teacher

These exercises are related to Our Common Heritage, the virtual exhibition of the Association of Cultural Heritage Education in Finland and the National Board of Antiquities. The exhibition illustrates processes related to World Heritage and offers information on World Heritage sites in Finland. The exercise sheet along with the answers can be found on the website www.kulttuurinvasio.fi in English, Finnish and Swedish.

Choose one of Finland's seven World Heritage Sites. Once you've chosen a site, create a tourist advertisement for it! Study your chosen World Heritage Site and think about how you would attract more people to visit it. What kinds of things would you highlight about the site? Why do you think people should visit it? Think of a catchy slogan for the site and be sure to illustrate your work as well.

TASK

1

2

7

DO LANDSCAPES CHANGE?

- assignment to be done in pairs

TASK

Think of a landscape that is important to you. It can be located in a natural environment or a city, something that you see every day or something that you remember fondly. Describe the landscape to your pair as accurately as you can. Think about the colours, sounds, lights and things you can see in the landscape, for example. Your pair's task is to draw or paint the landscape based on your description. Examine how true to life the resulting illustration is!

10

The environment and landscape are important parts of our shared cultural heritage. However, landscapes change over time. Think about what your chosen landscape might have looked like 100 years ago. What will it look like 100 years from now?

MY PERSONAL MAP

TASK

Think about your own living environment and the routes you travel every day. Draw your own map of the area. Name the roads, buildings, parks and other places in ways that describe how they relate to you. For example, you could name Helsinki Street the School Journey Road, while City Park could be your Football Practice Park. You can also use an existing map of your area and overwrite the place names with the names you come up with.

11

Work as a group and vote for an important cultural heritage site in your neighbourhood that you think illustrates the area well and should be preserved for future generations. When the site is chosen, discuss whether the site could become an official World Heritage Site!

TASK

- Examine these photos of Sammallahdenmäki.
- Consider which elements in the photos were formed naturally.
- Which elements are man-made?
- What types of buildings do you think existed in the area over 2,000 years ago?

8

SAMMALLAHDENMÄKI



VERLA GROUNDWOOD AND BOARD MILL



CONSIDER what types of workers the mill employed a hundred years ago.

- How does the factory work performed at Verla differ from modern mills?

2

STRUVE GEODETIC ARC



9

When the Struve Geodetic Arc was surveyed towards the beginning of the 19th century, it travelled through two countries: Sweden and Russia. The same area now spans ten countries: Norway, Sweden, Finland, Russia, Estonia, Latvia, Lithuania, Belarus, Moldova and Ukraine.

- Do you know which of these countries belonged to Sweden and which to Russia 200 years ago?

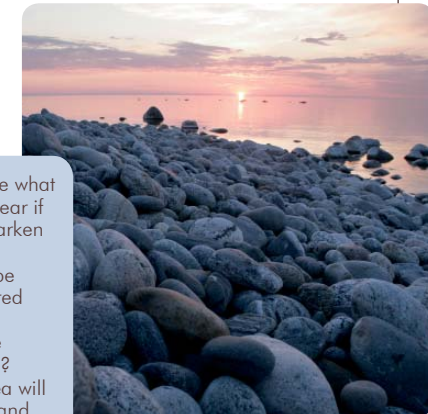
6

3

3

Close your eyes and imagine what kinds of sounds you could hear if you were currently in the Kvarken Archipelago.

- How would the soundscape differ from that of a hundred years past?
- What other elements have changed in the landscape?
- What do you think the area will look like in another thousand years?



KVARKEN ARCHIPELAGO

WORD ASSOCIATION

6

HISTORY • LANDSCAPE
TRAVEL • EXPLORE
INTERESTING • PRESERVE
VALUABLE • WORLD
COUNTRYSIDE • CITY
HUMAN • WONDER • VISIT
ADVENTURE • MODERN
BORING • PROTECT
ENDANGERED • OBJECT
PLACE • MEMORY
TRADITION • SETTLEMENT
BUILDING • NATURE
CULTURE • OLD

TASK
Study the word list below. Circle five words that you think best describe World Heritage Sites. Explain why you chose the words that you did. Write a poem, a song or a short story and use the words that you chose!

5



OLD RAUMA

TASK

- Examine the photos taken of Old Rauma.
- Can you discern buildings of different styles?
- Which building materials can you find?
- Identify similarities and differences between the buildings!

7

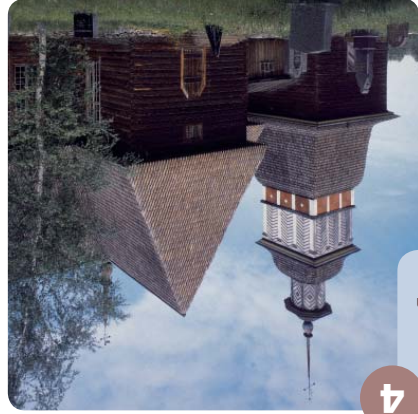


5

THE FORTRESS OF SUOMENLINNA

TASK

- Examine the accompanying images of Suomenlinna.
- Can you follow the line of the fortress' defensive wall?
- How do you think the fortress was defended in the past?
- Can you identify objects in the image that are related to the fortress' defence?



PETÄJÄVESI OLD CHURCH

4

- TASK**
- Examine these images of the church.
 - What kinds of decorations can you find?
 - How does the church differ from other churches you have seen?

4